

# SmartComponent Library

## The OpenEdge Application Modernization Framework



*Mike Fechner, Director, Consultingwerk Ltd.  
mike.fechner@consultingwerk.de*



## Consultingwerk Ltd.

- Independent IT consulting organization
- Focusing on **OpenEdge** and **related technology**
- Located in Cologne, Germany
- Customers in Europe, North America, Australia and South Africa
- Vendor of tools and consulting programs
- 25 years of Progress experience (V5 ... OE11)
- Specialized in GUI for .NET, OO, Software Architecture, Application Integration

## OpenEdge® application modernization solutions

- WinKit
- **SmartComponent Library**
- Dynamics4.NET
- Tools can be used together or separately
- Share common code base

## Agenda

- **Overview**
- Developing Business Logic
- Developing GUI for .NET Frontends
- User-Interface Options (Telerik)
- Progress Rollbase Integration
- DataDirect Integration
- Migration and Modernization Options



## SmartComponent Library

- Developer Framework aimed to increase Developer productivity and flexibility
- Reduce or avoid repeating tasks
  - Tools (code generation and round-trip dev.)
  - Functional Application Framework functions
  - Integration with existing OpenEdge tools
- Allow integration with existing Applications and Frameworks (3<sup>rd</sup> party or home grown)
- Allow usage of individual framework components as needed (not all or nothing)



# SmartComponent Library

- Provide Best Practices (object-orientation, ABL, OERA = OpenEdge Reference Architecture)
- Don't force developer in a certain direction, remain flexible for different requirements
- Backend business logic as the application “gold”
- Support for UI flexibility
  - Multiple UI's for the same application
  - UI of the month...
- Optional use of Application Framework (Security, Menu, Localization, ...) or existing

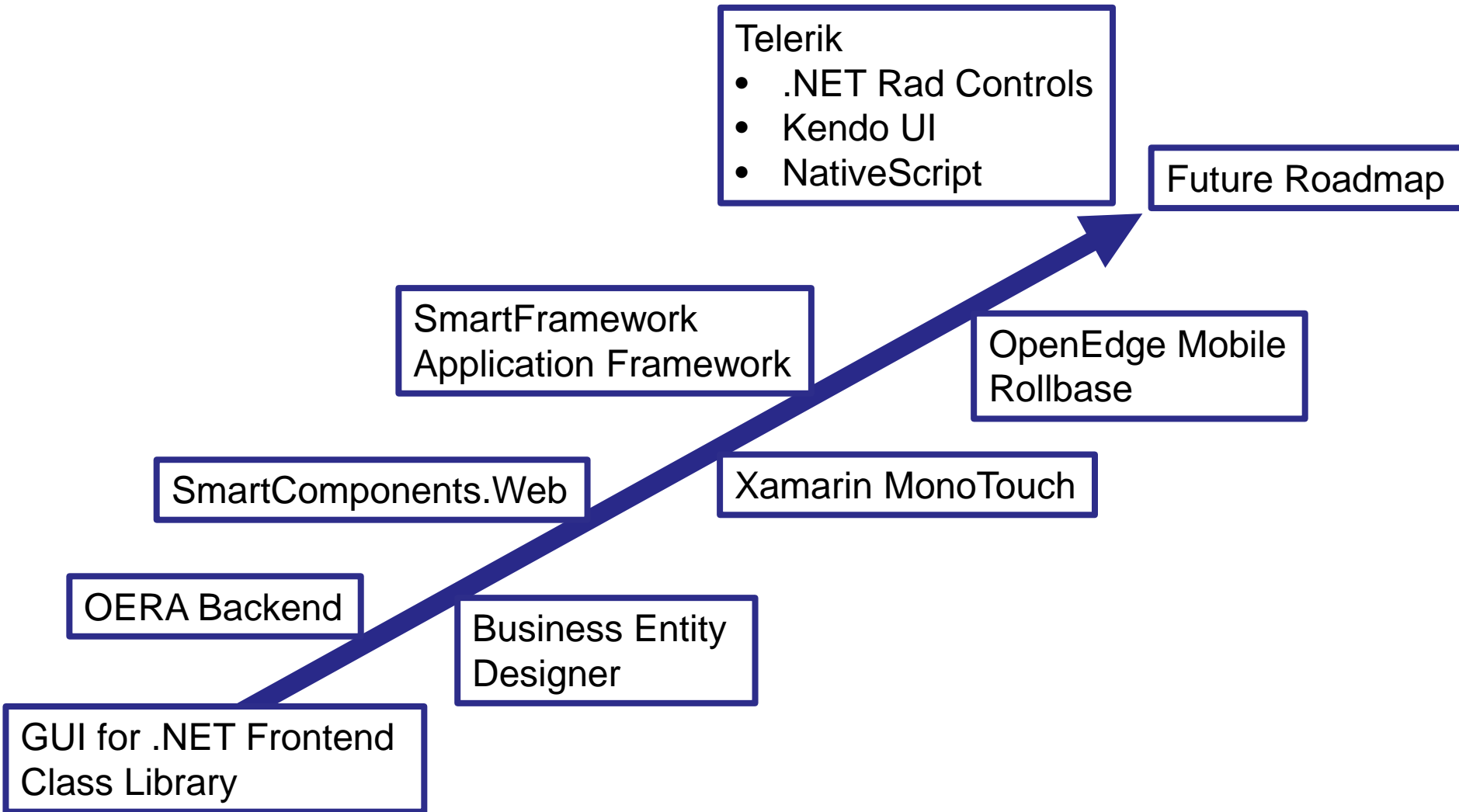


## SmartComponent Library

- „eat your own dog food“
- Most of our tools are written using our own libraries, 99.9% ABL code
- Full source code shipped to customers
- Weekly incremental releases (48 releases/year)
- Allow legacy code integration (call in/out)
- do not restrict the possibilities, allow customization
- don't understand “best practices” as the “only right way”



## Main Milestones and Building Blocks



## Agenda

- Overview
- **Developing Business Logic**
- Developing GUI for .NET Frontends
- User-Interface Options (Telerik)
- Progress Rollbase Integration
- DataDirect Integration
- Migration and Modernization Options



## Backend Overview

- The SmartComponent Library provides a flexible OERA Backend Architecture
- OpenEdge Reference Architecture
- Business Entities, Data Access Objects are a key component
- Tools to help developers to stay within the architecture
- Business Tasks, including ability for scheduled or async processing
- Common Infrastructure Components

## Business Logic Design Process

- Main Business Logic Components are
  - **Business Entities:** High level business rules
  - **Data Access Objects:** Data retrieval and update
  - **Business Task objects**
- Multiple programming paradigms
  - object-oriented
  - **ProDataset based or object-relational**
  - procedural

# Business Logic Principles

- Built around ProDatasets or object relational
- Strong OO foundation, OOABL enhancements
- Use Data Source objects or your preferred way of populating the ProDataset
- Strict separation of layers:
  - UI design process separated from BL design process
- Business Entities are a foundation for Business Tasks
- ProDatasets: relational data container
- Alternative: Entity Classes or Model Classes

## Business Logic Design Process

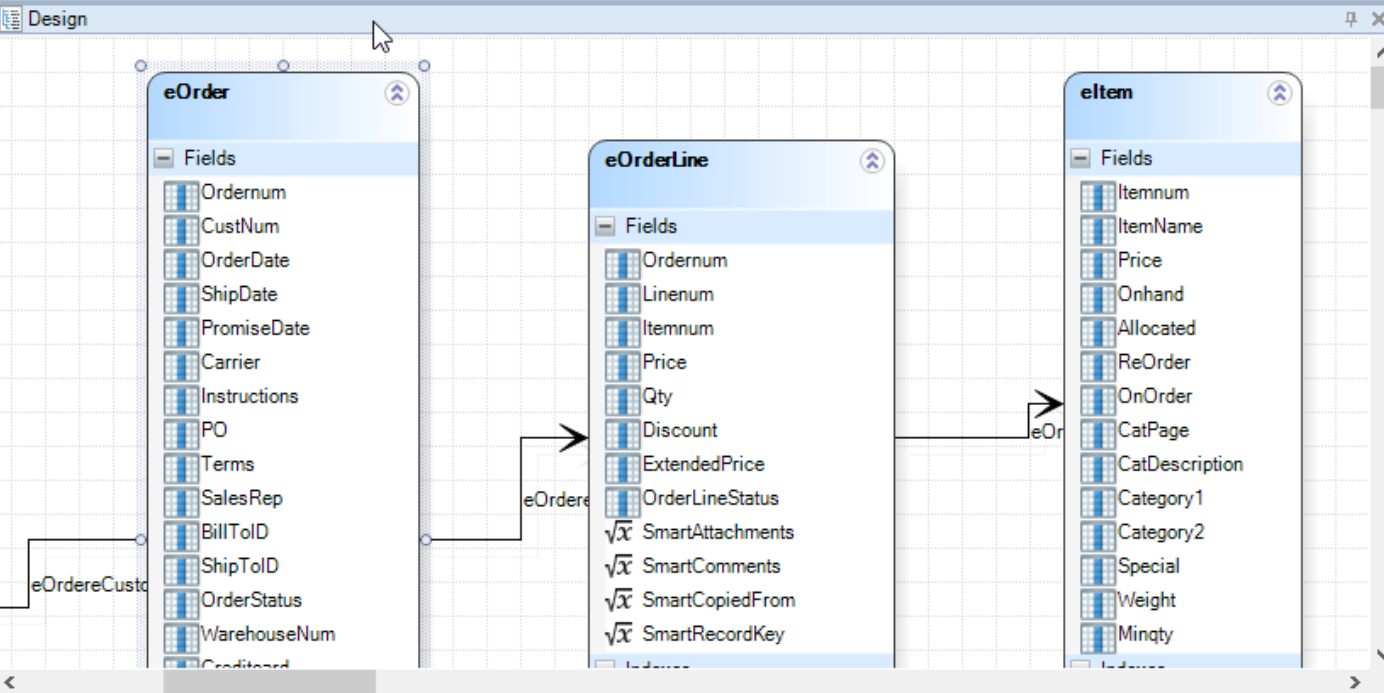
- Template based, Visual Design using Diagrams
- Flexible source code generator
  - Customizable templates
  - Customizable code generator (ABL class)
- Plugin Infrastructure (integrate your own ABL code)
  - Influence automatic naming and design process
  - Add and enhance code generation
- Query custom repositories during design phase
- Ad-hoc based Business Entity Test utility



File Business Entity Temp Table Data-Relation

Pointer Relation Relation Fields Generate Business Entity Tester Expand all Collapse all Batch Generator Include Files Service Interface Generate Viewer Generate Window Default fields DataDirect OpenAccess

M... Design Relation Build Test Database Tables REST Adapter UI Components SmartF... Data Integr...



Toolbox Database Fields...

Custom sports2000

- Benefits
- BillTo
- Bin
- Country
- Customer
- Department
- Employee
- Family
- Feedback
- InventoryTrans
- Invoice
- Item
- LocalDefault
- Order
- OrderLine
- POLine
- PurchaseOrder

icfdb SmartDB

sports2000.Custo...

- Address
- Address2
- Balance
- City
- Comments
- Contact
- Country
- CreditLimit
- CustNum
- Discount
- EmailAddress
- Fax
- Name
- Phone
- PostalCode
- SalesRep
- State
- Terms

Entity Properties

Business Entity Description Temp-Table Defaults Generate

Business Entity Name: OrderBusinessEntity

Business Entity Purpose: Business Entity for Order

Business Entity Package: Consultingwerk.SmartComponentsDemo.OERA.Sports2000

Dataset Controller Name: OrderDatasetController

Dataset Controller Package: Consultingwerk.SmartComponentsDemo.OERA.Sports2000

Dataset Path: Consultingwerk\SmartComponentsDemo\OERA\Sports2000

Entity Properties Table Properties Data-Relation Index Properties

Field Properties

Field	Description	XML	Calculated Field Expression
Name:	Ordernum		
Data Type:	Extent: 0	<input type="checkbox"/> Case Sensitive	
Initial:	0	<input type="checkbox"/> Initial Unknown	
Label:	Order Num		
Format:	zzzzzzzzz9		
Source Field:	Order.Ordernum		

Overview

- eOrder
  - eCustomer
  - eOrderLine
    - eltem
  - eSalesrep

## Demo 1

- Create SalesRep Business Entity
- Review in Progress Developer Studio
- Add „CustomDescription“ and „AverageQuota“ Calculated Fields

## Demo 2

- Create Customer Business Entity
- Query Customer using DatasetModel
- Add Validation on Name
- Update using DatasetModel
- Add custom method to Business Entity
  - Put Customer On Hold
- Invoke custom method using Model Method

## Demo 3

- Creation of a Customer-Order-OrderLine-Item Business Entity using the Designer
- Review generated source code
- Ad-hoc Query using Business Entity Tester

## Business Logic reuse – write once use in:

- **OpenEdge GUI for .NET**
- OpenEdge GUI/TTY/Batch
- **Telerik Kendo UI**
- **Telerik Mobile** and NativeScript
- WebSpeed
- OpenEdge BPM
- Native Mobile Applications (Xamarin Studio)
- Progress Rollbase
- Web Services and REST Services
- Sonic ESB
- DataDirect ODBC
- Unit Testing frameworks





## Agenda

- Overview
- Developing Business Logic
- **Developing GUI for .NET Frontends**
- User-Interface Options (Telerik)
- Progress Rollbase Integration
- DataDirect Integration
- Migration and Modernization Options





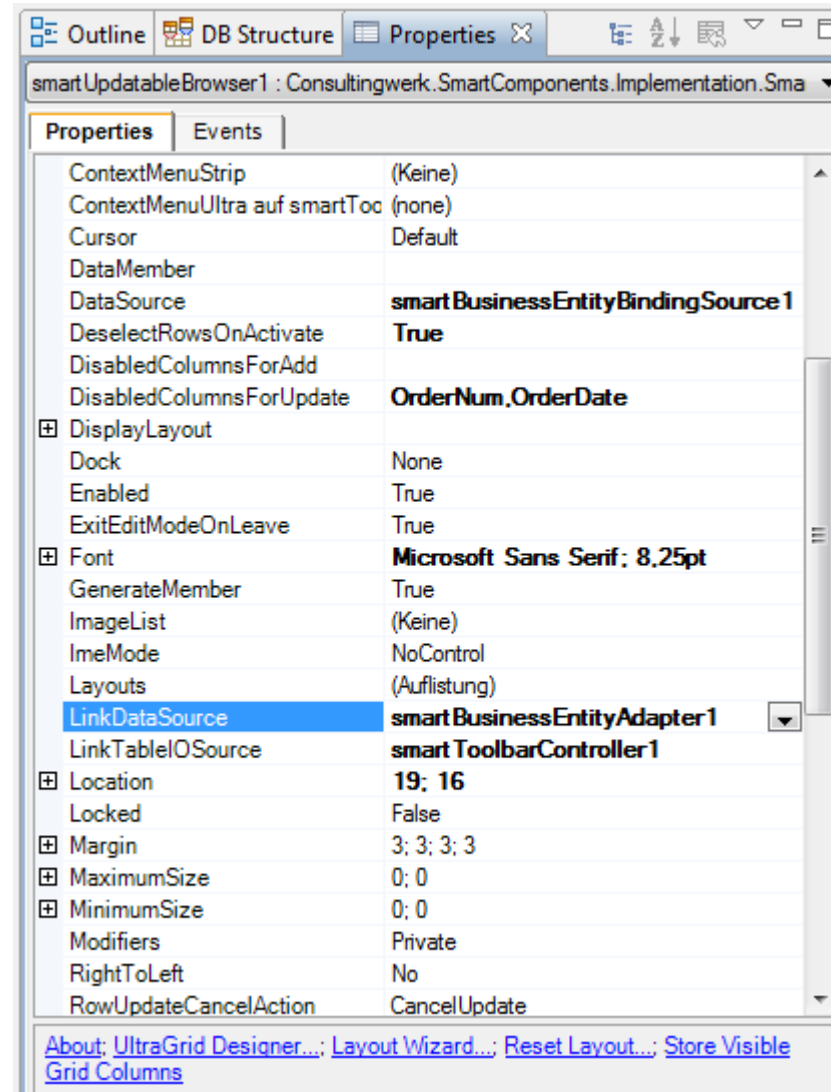
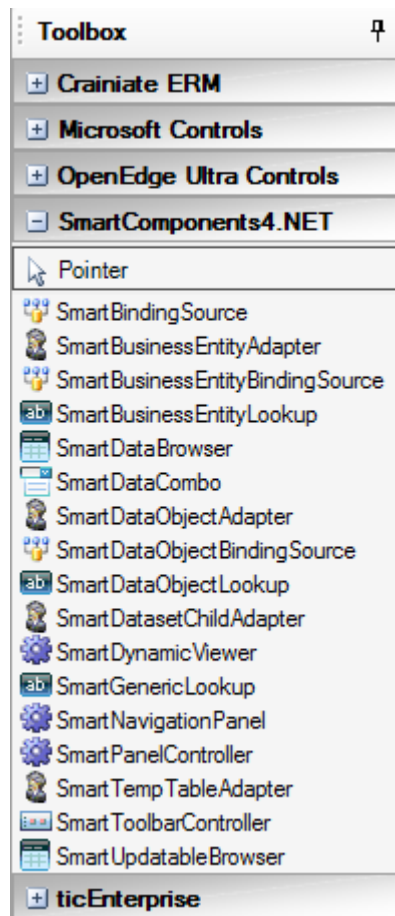
## GUI for .NET Frontend overview

- GUI for .NET client infrastructure
- Extension to OpenEdge UltraControls / Infragistics NetAdvantage for .NET Controls
- Other Control sets may be used
- Tightly Integrated into the .NET Visual Designer
  - configuration of behavior and design in a single and intuitive place
  - no restrictions to the way .NET Controls are used
  - wizards and property sheets for repetitive tasks

# User Interface Design Process

- Screen design based on rich foundation classes
- Compose Forms by adding rich SmartComponents and standard .NET Controls
- Connect and parameterize SmartComponents using property grid and Wizards
- Data centric design process: Achieving UI Design productivity similar to the AppBuilder

## User Interface Design Process



## Tight integration with Control libraries



- Infragistics NetAdvantage .NET Controls / Infragistics WinForms
- OpenEdge UltraControls
  
- Following Progress' acquisition of Telerik we will provide optional support for Telerik RadControls (available fall 2015)



## Demo

- Use Business Entity Designer to generate UI
- Open in Visual Designer
- Add Salesrep Lookup in Visual Designer
- Add to Menu Structure using Drag and Drop
  
- Build Viewer in .NET Visual Designer
- Build Form in .NET Visual Designer

## Agenda

- Overview
- Developing Business Logic
- Developing GUI for .NET Frontends
- **User-Interface Options (Telerik)**
- Progress Rollbase Integration
- DataDirect Integration
- Migration and Modernization Options





## Support for Progress/Telerik Mobile

- SmartComponent Library Backend and Progress/Telerik Mobile and Web Options = perfect match!
- Generation of fully functional Business Entity Service Interface from Business Entity Designer
- ... just deploy to REST Adapter and start building OE Mobile screens
  
- Alternatively use Generic Service Interface for JSDO based client

## Demo Telerik Mobile Platform

- Create a new hybrid mobile project in Telerik Mobile platform
- Add access to SalesRep Business Entity
- Leverage same Business Entity in Web and Desktop
  
- Recorded version of the demo:  
<https://www.youtube.com/watch?v=m-63Wzpjs9c>

## Demo Kendo UI

- AppServer Backend
- Generate Kendo UI Grid Screen
- Server-side filtering, sorting



# Kendo UI

THE ART OF WEB DEVELOPMENT

## Demo Kendo UI

- Code Review JSON Generation Classes

## Agenda

- Overview
- Developing Business Logic
- Developing GUI for .NET Frontends
- User-Interface Options (Telerik)
- **Progress Rollbase Integration**
- DataDirect Integration
- Migration and Modernization Options



## Progress Rollbase

- PaaS for rapid building of applications for the web (HTML and JavaScript)
- IDE in web browser
- Applications for known users
- Portals for anonymous users
- Hosted by Progress Software or on your own cloud
- Suited for building “satellite apps” around core business OpenEdge application





## SmartComponent Library as backend

- Rollbase can access OpenEdge „services“ for CRUD operations
- Business Entities as data source
- **Wizard in Business Entity Designer** generates Interface class or generic REST service
- Complex filter support (batching, sorting)
- CRUD with support for validation
- Based on REST calls to AppServer



## SmartRollbase Adapter

- Query Rollbase Data (into Temp-Tables)
- Modify (CRUD) Rollbase Data
- Query Rollbase meta data from OpenEdge for Interface generation
- Generate ABL Temp-Table from Rollbase objects
- Modify Rollbase Metadata from ABL code

## Agenda

- Overview
- Developing Business Logic
- Developing GUI for .NET Frontends
- User-Interface Options (Telerik)
- Progress Rollbase Integration
- **DataDirect Integration**
- Migration and Modernization Options



## DataDirect OpenAccess for OpenEdge

- Access your OpenEdge business logic from standard desktop applications such as Crystal Reports, Qlik View, MS Office
- Turn ABL business logic into standard ODBC data sources
- Provide BI access to application data and business logic not just the SQL database
- Use ABL code to create reporting views



 **PROGRESS**® DataDirect®

## DataDirect OpenAccess for OpenEdge

- Use ABL data access and data utilization
- Reuse of existing ABL code possible
- Manipulate query string from the ABL
- Leverage existing application security when accessing data
- Leverage existing validation logic when processing data updates, including support for database trigger!
- Access your data in LAN and via Internet





# One-click integration with OpenAccess

- Expose Business Entities as ODBC data source
- Define result set properties and generate all required assets

The screenshot displays the OpenAccess SDK Wizard interface. On the left, a tree view shows the following entities and their fields:

- eCustomer** (expanded):
  - CustNum
  - Country
  - Name
  - Address
  - Address2
  - City
  - State
  - PostalCode
  - Contact
  - Phone
  - SalesRep
  - CreditLimit
  - Balance
  - Terms
  - Discount
  - Comments
- eltem**:
  - Itemnum
- eOrder**:
  - Ordernum

The wizard's main area shows a tree view of the selected entities:  eOrder,  eCustomer,  eOrderLine,  eltem, and  eSalesrep. Below this tree is an  Outer join checkbox.

Configuration fields on the right include:

- Interface Name (SQL Table): OrderHeader
- Maximum Number of Rows: 0 (all rows)
- STOP-AFTER: 0 (off)
- JSON Catalog Folder: C:\Work\SmartComponents4NET\1
- AppServer Code Base: C:\Work\SmartComponents4NET\1
- Interface Procedure Relative Path: smartoa



## Demo

- Expose Order Business Entity as ODBC Data Source
- Add Calculated field with Order total
- Review interface procedure and JSON Catalog

## Feature review

- One-click interface generation through wizard
- Template based
- Join multiple Business Entity tables into a single result table
- Calculated field support
- Define execution limits (number of rows and number of seconds)
- Query manipulation support

## Agenda

- Overview
- Developing Business Logic
- Developing GUI for .NET Frontends
- User-Interface Options (Telerik)
- Progress Rollbase Integration
- DataDirect Integration
- **Migration and Modernization Options**



# SmartComponent Library and WinKit

- ***SmartComponent Library*** and ***WinKit*** are part of our GUI for .NET adoption and migration strategy
  - WinKit: Enhancement of existing screens
  - SmartComponent Library: New functionality
- Shared framework foundation classes
- Compatible directory and project structure
- Used side by side in customer projects
- 40 different WinKit implementations already
- WinKit included in SmartComponent Library

Order Maintenance
\_ □ X

File Navigate Maintenance View

← ← → → 👤 ✎ 🏠 ⌨ ✖

Order Num: 1      Ordered: 23/01/09

Order Status: Shipped

Shipped: 28/01/2009

Promised: 28/01/09

Cust Num: 53      Name: Offside Hockey

Carrier: FlyByNight Courier      Terms: Net30      PO:

Orderlines       Customer Detail

Handle with care

OrderLines

Line Num	Item Num	Item Name	Qty	Price	Extende
1	54	Canoe	30	4,86	
2	55	Surfboard	21	23,85	
3	53	Swimming Trunks	75	8,77	
4	28	Ski Gloves	39	23,00	
5	39	Baseball	75	34,00	2.
6	26	Catchers Mit	28	4,99	

Line Num: 1

Item Num: 54

Item Name: Canoe

Price: 4,86

Qty: 30    Extended Price: 131,22

Discount: 10%

Order Line Status: Shipped

Order Maintenance - Redesigned

File Start Options

Navigation: First, Prev, Next, Last

Search: Search

Maintenance: Edit, Save, Delete, Cancel

Order Num: 1      Ordered: 23/01/09

Order Status: Shipped

Shipped: 28/01/2009

Promised: 28/01/09

Cust Num: 53      Name: Offside Hockey

Carrier: FlyByNight Courier      Terms: Net30      PO:

Handle with care

Orderlines      Customer Detail

Legen Sie eine Spalte hier ab, um nach dieser zu gruppieren.

Line Num	Item Num	Item Name	Qty	Price	Ext
1	54	Canoe	30	4,86	
2	55	Surfboard	21	23,85	
3	53	Swimming Trunks	75	8,77	
4	28	Ski Gloves	39	23,00	
5	39	Baseball	75	34,00	
6	26	Catchers Mit	28	4,99	

Line Num: 1

Item Num: 54

Item Name: Canoe

Price: 4,86

Qty: 30      Extended Price: 131,22

Discount: 10%

Order Line Status: Shipped



## Alternative

- Migration of existing Applications



# Migration and Modernization options

- **Enhance and extend existing applications**
- SmartComponent Library integrates with existing applications and frameworks
- SmartComponent Library functionality can be accessed by existing code
- SmartComponent Library may access existing code, depending on the kind of code
  - direct execution or through adapters
  - custom service or component implementations
  - Don't worry about SHARED VARIABLES etc...

# Migration and Modernization options

- Source code migration
- Options vary based on current code
- Strong usage of Proparse for analyzing source code, importing into Business Entity Designer
- Migration of ADM2 or Dynamics applications
- Migration of custom applications possible
- Template based migration of UI components

## Demo

- Import existing temp-table into Business Entity Designer
- Migration of ABL GUI into GUI for .NET

# Questions



## Don't miss my other presentations

- Monday 11.00: **Telerik .NET for Infragistics Users**
- Monday 16.45: **DIY: Lists, Enumerators, Enumerations, Serialization**
- Tuesday 11.00: **Modernization – the SmartComponent Library**
- Tuesday 14.15: **Structured Error Handling**
- Wednesday 11.00: **Telerik Kendo UI with WebSpeed**



**PUG**  
**CHALLENGE**  
**EXCHANGE**  
**AMERICAS**